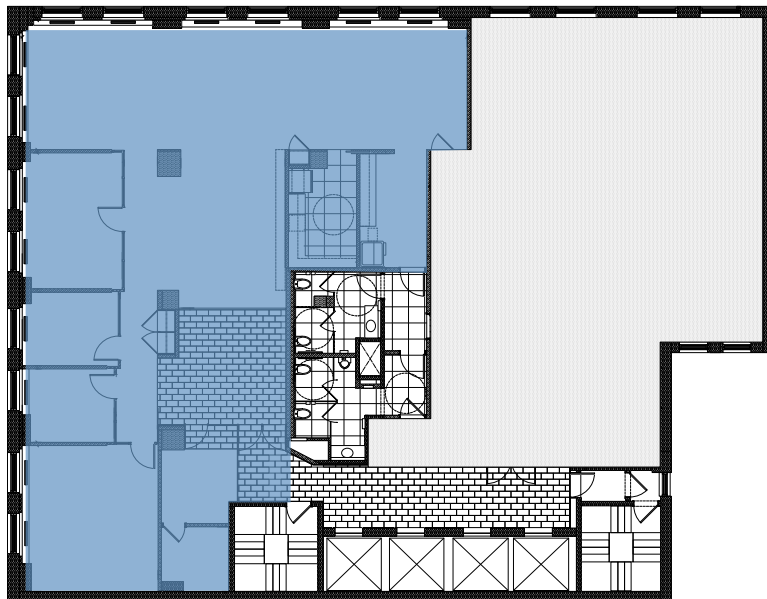


## Partial 6th Floor | Suite 602 | 4,850 RSF

## Floor Plan:



Asking: Upon request

Term: 2-10 years

Available: April 2022

- Short or long-term lease opportunity
- Built space with high-end finishes and exposed ceilings
- Currently features three offices, conference room, large open space and a pantry
- Move-in condition
- Views east and south
- FF&E can be made available

[CLICK HERE FOR VIRTUAL TOUR](#)

