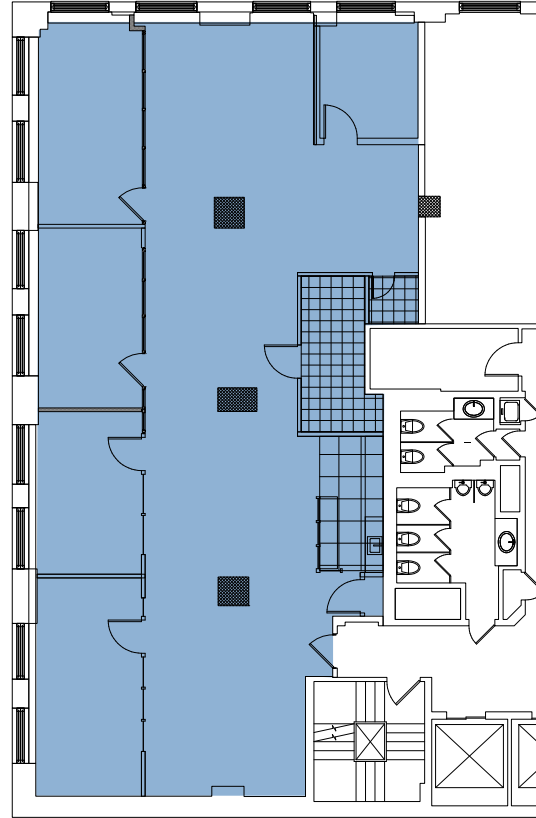


## Partial 8th Floor | Suite 801 | 3,784 RSF

## Floor Plan:



Asking: Upon request

Term: 2-10 years

Available: Immediate

- Short or long-term lease opportunity
- Built space with high-end finishes and exposed ceilings
- Currently features three large offices, a conference room, room for six workstations and a large open pantry
- Tenant controlled air-cooled HVAC
- Move-in condition
- Views south and east
- FF&E can be made available

[CLICK HERE FOR VIRTUAL TOUR](#)

